



JW MARRIOTT
SAVANNAH
PLANT RIVERSIDE DISTRICT

A STORIED TRANSFORMATION. A REIMAGINED EVENT.

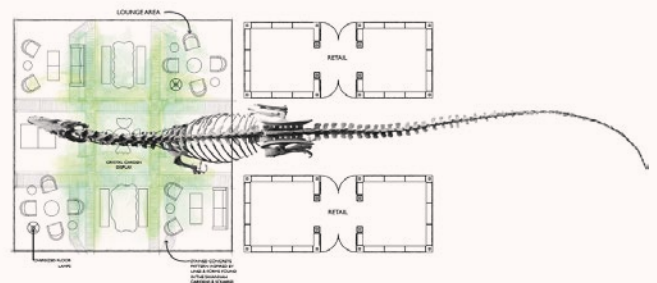
Experience a journey across eras as Savannah's historic riverfront welcomes a vibrant new entertainment destination, Plant Riverside District. This 4.5 acre, waterfront property features the Hostess City's most memorable hospitality experience, from luxury stays to distinctive dining to live entertainment. A vision of orchestrating success, JW Marriott Savannah Plant Riverside District caters to groups with dynamic venues, an award-winning culinary team and dedicated event specialists.



INSPIRED LUXURIES

- 18,000 sq. ft. of dynamic meeting and event space
- Indoor and outdoor event venues, including two ballrooms
- Rooftop decks and garden overlooking the Savannah River, available for private events
- More than a dozen unique food & beverage offerings including an upscale steakhouse, African lounge, brick oven pizzeria, seafood and BBQ pavilions, rooftop garden and biergarten
- Live music venue, with headliners booked by Live Nation
- Quarter-mile of new riverwalk, with high-end specialty retail and art galleries
- Natural science exhibits and Martin Luther King Jr. dedicated park

The District offers 18,000 sq. ft. of meeting and event space, including breakout, prefunction and outdoor spaces. Connect with your team under a Savannah sunset at our skytop lounge. Watch ships sail by on the Savannah River from a rooftop garden. Gather under a life-size dinosaur skeleton. Or get down to business in one of our modern meeting rooms.



419 BEAUTIFULLY APPOINTED GUEST ROOMS AND SUITES

Create your moment at the luxurious JW Marriott Savannah Plant Riverside District along the Savannah River, featuring a repurposed electric power plant and two newly-constructed mixed-use spaces.

Power Plant Building

The repurposed building retains the original plant's architectural identity while featuring modern amenities. Step inside the impressive lobby, complete with a chrome-dipped, life-size dinosaur installation, and explore its five culinary offerings, including a vibrant rooftop lounge.

Three Muses Building

Delight in elegant adventures in this newly-added retreat, complete with European-inspired decor and art installations. Discover unique Savannah finds in the ground floor specialty shops or indulge in a contemplative moment at the rooftop garden lounge.

Atlantic Building

Contemporary details and spacious floorplans make this the perfect spot for large events or intimate affairs along the river. The Atlantic is also home to a live music venue, the newest hotspot for concerts in Savannah, and the hotel's rooftop pool.



EXCEPTIONAL MEETINGS BEGIN WITH INTUITIVE SERVICE.

	LxWxH	SQ. FT.	THEATER	SCHOOL (3 per 6)	CONFERENCE	U-SHAPE	RECEPTION	BANQUET
Amethyst Ballroom	72x40x15	2,772	252	160	38	40	250	180
Amethyst Ballroom 1	37x40x15	1,386	112	80	20	24	150	90
Amethyst Ballroom 2	35x40x15	1,386	112	80	20	24	150	90
Amethyst Ballroom Prefunction	28x17x65	525	—	—	—	—	50	—
Citrine Meeting Room	62x21x11	1,445	140	84	38	36	150	90
Citrine Meeting Room 1	30x21x11	723	62	42	18	16	75	40
Citrine Meeting Room 2	32x21x11	723	62	42	18	16	75	40
Citrine Meeting Room Prefunction	121x11x14	1,331	—	—	—	—	50	—
The Moon Deck	63x50x11	3,150	210	—	—	—	210	160
Beethoven's Terrace	50x39x11	1,950	144	72	—	32	144	110
Dressing Room	10x18x11	180	—	—	—	—	—	—
Salzburg Ballroom	124x52x14	6,336	620	381	—	74	650	400
Salzburg Ballroom 1	40x52x14	2,082	194	127	—	28	200	120
Salzburg Ballroom 2	41x52x14	2,127	198	127	—	28	200	120
Salzburg Ballroom 3	41x52x14	2,127	194	127	—	28	200	120
Salzburg Ballroom 1 & 2	82x52x14	4,209	420	254	—	46	400	240
Salzburg Ballroom 2 & 3	82x52x14	4,254	420	254	—	46	400	240
Salzburg Ballroom Prefunction	111x24x14	4,227	250	—	—	—	250	—
Salzburg Ballroom Terrace	170x10x14	4,651	150	—	—	—	150	—
Live Music Venue	70x47x17	3,092	288	180	—	44	300	140
Music Venue Stage	40x22x17	893	—	—	—	—	—	—
Music Venue Prefunction	60x25x13	1,496	—	—	—	—	—	—

sales@jwsavannah.com | 912.373.9100
marriott.com/savjw
 400 West River Street Savannah, GA 31401

