



**JW MARRIOTT**

SAVANNAH  
PLANT RIVERSIDE DISTRICT

A STORIED TRANSFORMATION.  
A REIMAGINED EVENT.

- INSPIRED LUXURIES
- 18,000 sq. ft. of dynamic meeting and event space
- Indoor and outdoor event venues, including Salzburg and Amethyst Ballrooms
- Rooftop spaces for private events including Moon Deck and Myrtle & Rose Rooftop Bar
- More than a dozen unique food and beverage offerings including Stone & Webster Chophouse, Baobab Lounge, Graffito Pizza, District Seafood and Smokehouse, Myrtle & Rose Rooftop Bar, Savannah Tequila Company and Electric Moon
- District Live, live music venue creating a unique setting for meetings and events
- Natural science exhibits
- Martin Luther King Jr. dedicated outdoor park
- Poseidon Spa providing rejuvenating massages, HydraFacials and Wellness Rituals
- Compass Pool Lounge

## 419 BEAUTIFULLY APPOINTED GUEST ROOMS AND SUITES

Create your moment at the luxurious JW Marriott Savannah Plant Riverside District along the Savannah River, featuring a repurposed electric power plant and two newly-constructed mixed-use spaces.

### Power Plant

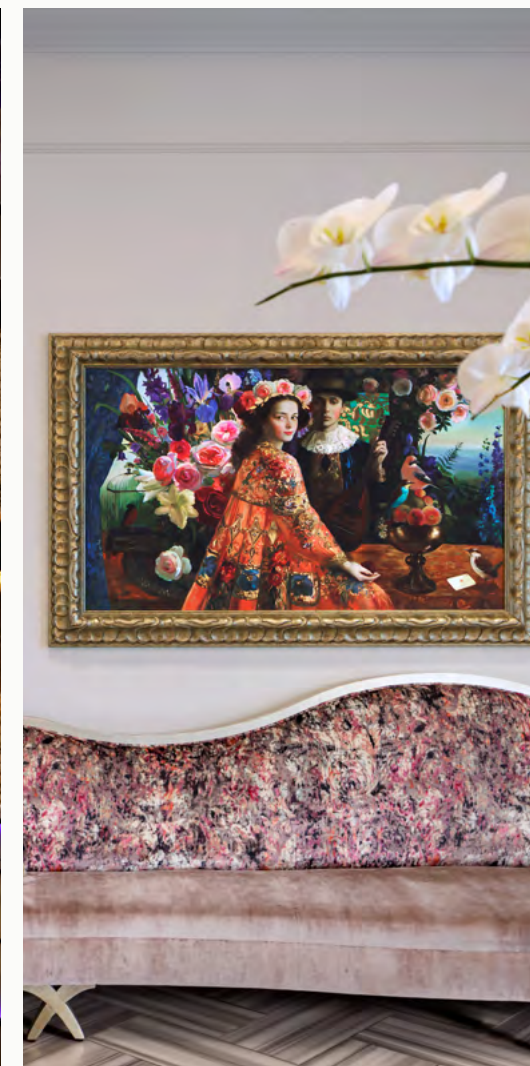
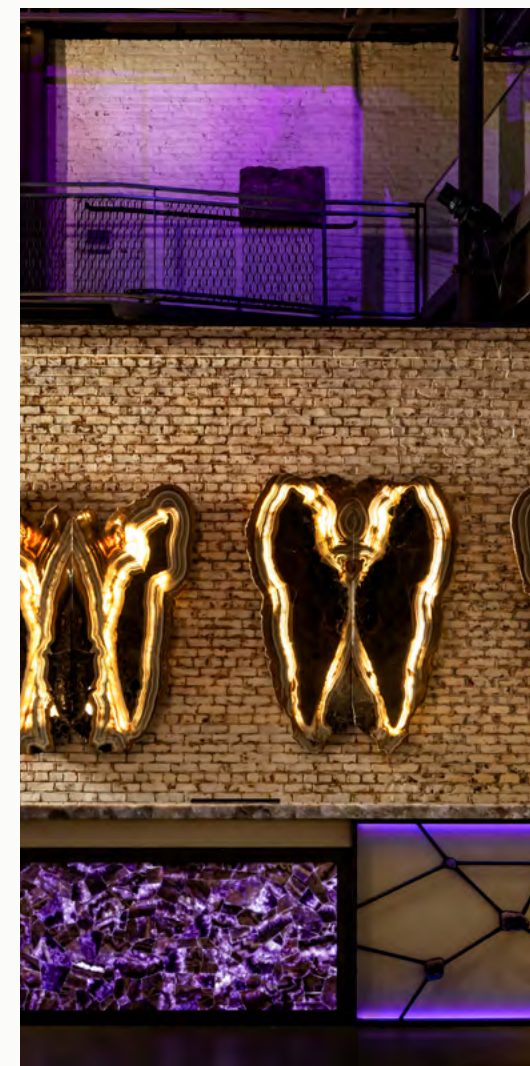
The bold character of a repurposed power plant is transformed into a contemporary riverside retreat. The Power Plant's hotel rooms retain historic architectural details paired with modern-industrial stylings perfect for relaxing and recharging.

### Three Muses

Designed to reflect pure beauty, the guestrooms reveal soft and sophisticated colors and are adorned with magical realist art. The charming detailing and iconic views of the Savannah Riverfront make the Three Muses perfect for a romantic getaway.

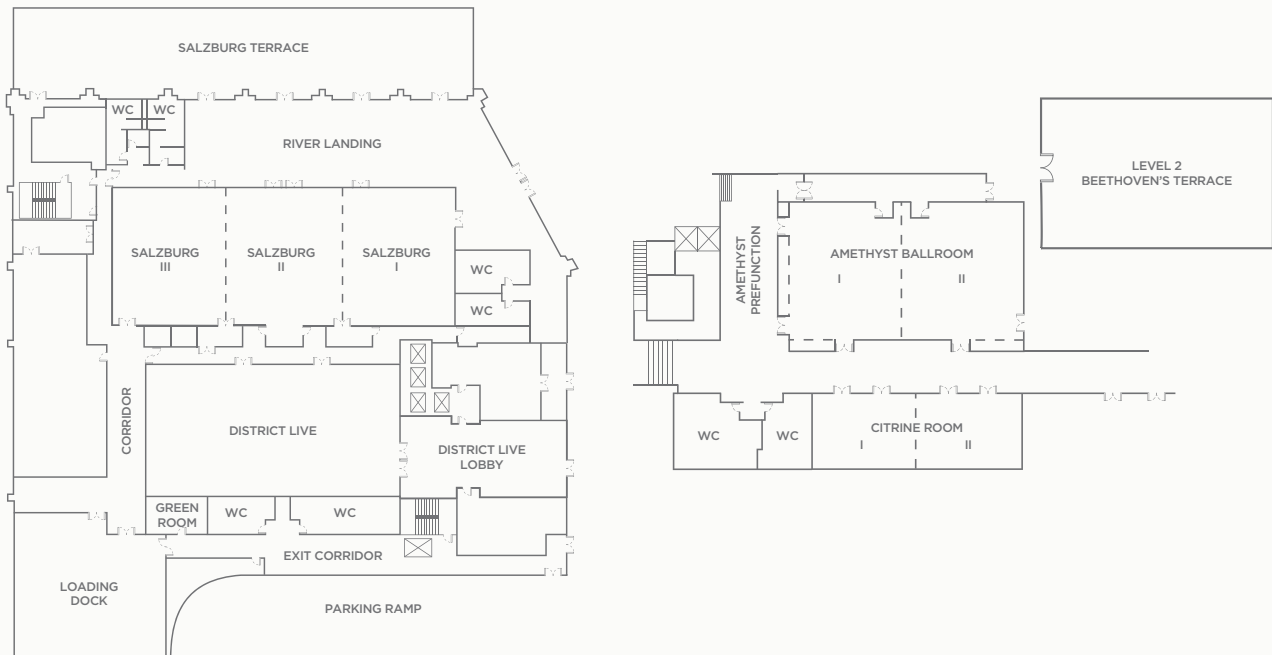
### Atlantic

Handsome and stately, the Atlantic invites guests on a getaway inspired by a bespoke journey aboard a luxury yacht. Traditional maritime details define this contemporary masterpiece, setting the stage for a stay that's both relaxing and luxurious.



# EXCEPTIONAL MEETINGS BEGIN WITH INTUITIVE SERVICE.

	LXWXH	SQUARE FT	THEATER	CLASSROOM	CONFERENCE	U-SHAPE	RECEPTION	BANQUET	TABLETOP EXHIBITS
Amethyst Ballroom	72x40x15	2772	250	144	60	72	00	170	40
Amethyst Ballroom I	37x40x15	1386	125	69	30	36	100	80	20
Amethyst Ballroom II	35x40x15	1386	125	69	30	36	100	80	20
Citrine Meeting Room	62x21x11	1445	100	90	48	54	100	90	17
Citrine Meeting Room I	30x21x11	723	50	45	24	30	50	40	8
Citrine Meeting Room II	32x21x11	723	50	45	24	30	50	40	8
Salzburg Ballroom	124x52x14	6336	600	405	96	114	600	400	87
Salzburg Ballroom I	40x52x14	2082	200	135	32	45	200	120	29
Salzburg Ballroom II	41x52x14	2127	200	135	32	45	200	120	29
Salzburg Ballroom III	41x52x14	2127	200	135	32	45	200	120	29
Salzburg Ballroom I & II	82x52x14	4209	400	270	64	90	400	240	58
Salzburg Ballroom II & III	82x52x14	4254	400	270	64	90	400	240	58
River Landing	111x24x14	4227	160	-	-	-	250	100	24
Salzburg Terrace	170x10x14	4651	80	-	-	-	150	100	-
Executive Lounge	-	1401	-	-	-	15	-	-	-
District Live Venue	70x47x17	3092	285	135	48	63	300	240	42
Beethoven's Music Terrace	50x39x11	1950	150	90	30	45	140	100	-
The Moon Deck	63x50x11	3150	-	-	-	-	200	-	-
Myrtle & Rose Rooftop Bar	-	4662	-	-	-	-	150	-	-
Stone & Webster Private Dining Room	34x23x14	782	-	-	-	-	40	-	-
Stone & Webster Red Curtain	-	-	-	-	-	-	24	-	-
MLK Jr Park	-	393	-	-	-	-	200	-	-



sales@jwsavannah.com | 912.373.9200  
[jwsavannah.com](http://jwsavannah.com)  
 400 West River Street Savannah, GA 31401